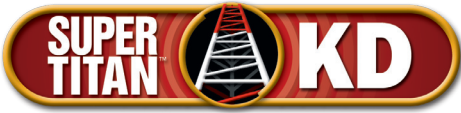


Canadian Version



Trylon

www.trylon.com



Trylon’s SuperTitan KD bridges the cost gap between the lighter-weight Titan towers and more costly custom-designed towers.

The SuperTitan KD is a modular tower that can be built up to 58m (190 feet) high. Consisting of 21 standard sections, each 3m (10 feet) high, this modular system can be configured to create towers of varying heights and loading capacities. The SuperTitan KD design conforms to CSA-S37-01 standards and can be stamped by a professional engineer.

SuperTITAN KD SPECIFICATIONS

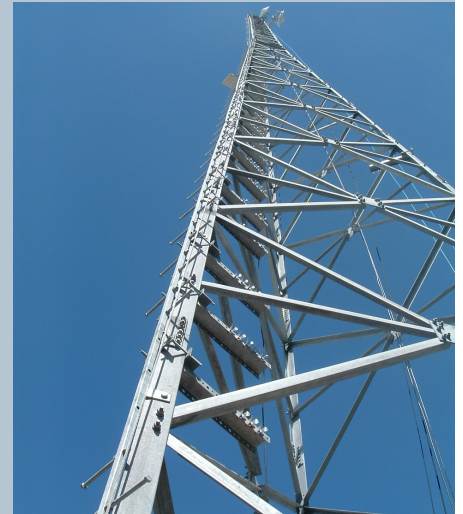
- Brand New Packaging Process
 - Minimize freight costs (weight & dimensions)
 - Minimizes storage space
 - Improved economic footprint
- All members are hot-dip galvanized throughout
- Designed to conform with CSA-S37-01 Standard
- Maximum height: 190ft
- Section height: 10ft

SuperTITAN KD APPLICATIONS

- Emergency Services (Police, Fire, etc.)
 - Increased tower capacity
- SCADA Systems
 - Ideally suited for base stations with larger loading parameters
- Broadband
- Base Station towers

THE SuperTITAN KD DIFFERENCE

- Maximum height 190ft compared to 150ft for competitors
- New innovative packaging
- Drastically reduces freight costs
- Product in stock at distributor locations
- Reduced lead-times vs. direct shipments from manufacturer



SuperTitan KD Tower

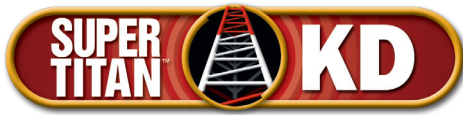


30' SuperTitan KD tower



New! SuperTitan KD packaging method

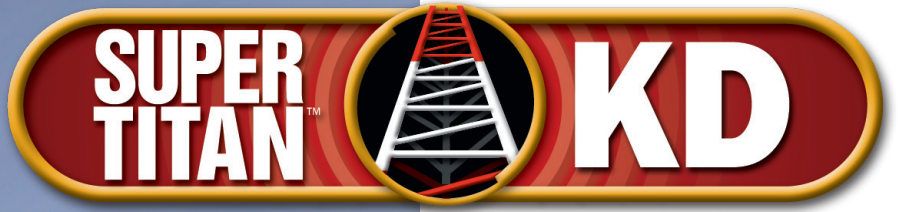




SuperTITAN KD WIND LOAD CHARTS

Height	Model	CSA Class 1: 10mm ice at 350/450/550 PA (round)			CSA Class 1: 25mm ice at 350/450/550 PA (round)		
		350	450	550	350	450	550
20'	S100	80	60	47	80	60	47
20'	S200	93	70	55	93	70	55
20'	S300	107	82	65	109	82	65
30'	S100	44	30	22	40	29	20
30'	S200	52	37	26	50	37	26
30'	S300	59	41	31	59	41	31
40'	S100	27	16	10	23	14	9
40'	S200	32	20	12	30	20	10
40'	S300	54	39	29	53	39	29
40'	S400	106	80	63	105	80	61
50'	S100	14	5	-	10	5	-
50'	S200	30	19	10	29	19	10
50'	S300	50	36	27	50	35	27
50'	S400	84	58	42	73	52	39
50'	S500	90	62	44	80	60	40
50'	S600	92	60	40	83	60	40
60'	S100	12	3	-	10	3	-
60'	S200	27	17	10	25	17	10
60'	S300	49	34	20	49	31	20
60'	S400	60	38	25	51	38	25
60'	S500	66	40	27	60	40	27
70'	S100	10	1	-	10	1	-
70'	S200	25	15	8	25	15	7
70'	S300	39	20	10	33	20	10
70'	S400	40	22	10	40	22	10
70'	S500	49	28	12	49	28	12
70'	S600	50	29	12	49	29	12
80'	S100	10	1	-	10	-	-
80'	S200	22	9	-	20	8	-
80'	S300	25	9	-	21	9	-
80'	S400	30	12	-	30	12	-
80'	S500	30	12	-	30	12	-
80'	H500	60	37	20	53	37	20
80'	H510	84	54	32	85	54	30
90'	S100	9	-	-	9	-	-
90'	S200	10	-	-	10	-	-
90'	S300	15	-	-	14	-	-
90'	S400	15	-	-	15	-	-

Height	Model	CSA Class 1: 10mm ice at 350/450/550 PA (round)			CSA Class 1: 25mm ice at 350/450/550 PA (round)		
		350	450	550	350	450	550
90'	H400	38	18	7	35	19	7
90'	H410	58	34	16	58	34	14
90'	S600	77	45	22	77	45	19
100'	H310	36	18	3	36	18	3
100'	S510	70	36	16	70	36	16
100'	S610	88	52	30	88	52	30
110'	H210	20	6	-	20	5	-
110'	S410	50	20	2	50	20	2
110'	S510	64	34	12	64	32	12
110'	S600	70	37	13	70	37	13
120'	H110	8	-	-	8	-	-
120'	S300	17	2	-	17	2	-
120'	S400	30	13	-	30	13	-
120'	S500	51	20	2	40	20	2
120'	S600	63	30	9	50	30	9
130'	S300	16	1	-	16	1	-
130'	S400	30	10	-	30	10	-
130'	S500	46	15	-	40	15	-
130'	S600	60	28	5	50	28	5
130'	S700	60	37	19	60	37	19
140'	S300	15	-	-	15	-	-
140'	S400	28	4	-	27	4	-
140'	S500	42	13	-	40	13	-
140'	S600	58	25	3	50	25	3
140'	S700	60	36	15	60	35	15
140'	S800	67	45	31	67	45	31
150'	S300	14	-	-	14	-	-
150'	S400	28	1	-	27	1	-
150'	S500	40	10	-	39	10	-
150'	S600	54	22	-	48	22	-
150'	S700	58	33	13	58	32	13
160'	S300	13	-	-	13	-	-
160'	S400	27	-	-	27	-	-
160'	S500	38	10	-	33	10	-
160'	S600	52	20	-	44	20	-
170'	S300	11	-	-	11	-	-
170'	S400	23	-	-	23	-	-
170'	S500	35	8	-	31	8	-
180'	S300	10	-	-	10	-	-
180'	S400	21	-	-	21	-	-
190'	S300	10	-	-	10	-	-



TRYLON®

21 South Field Drive, Elmira, ON N3B 0A6

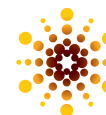
Phone: (519) 669-5421

Fax: (519) 669-8912

www.trylon.com

StockProducts@trylon.com

TM, ®, ©, LOGOS, STYLIZED NAMES ARE TRADEMARKS OF TRYLON MANUFACTURING COMPANY LTD. © 2013 PRINTED IN CANADA



Trylon

www.trylon.com